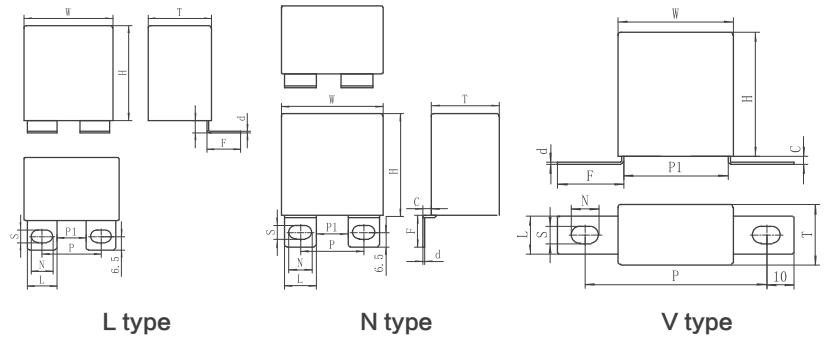
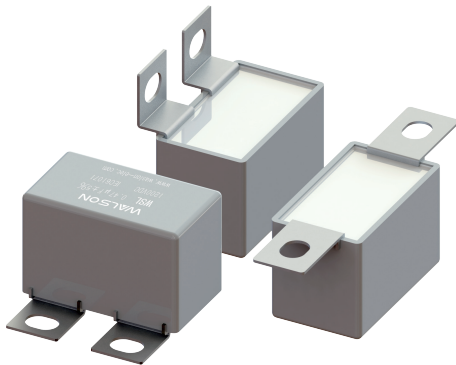


WSL 接线片式IGBT吸收电容器

IGBT snubber capacitor with lug terminals

外形图 Outline Drawing



单位 Unit: mm

特点 Features

- 采用耐高温聚丙烯薄膜介质，无感卷绕结构
- 耐溶剂塑料盒，导热性树脂灌封
- 等效串联电阻小，能承受较大的纹波电流
- 能承受高的峰值电流
- 电容损耗小、自感小、内部温度低
- 寿命长、良好的阻燃性能（UL94V-0级）
- High-temperature resistant PP film as dielectric, no inductance winding structure
- Solvent resistant plastic housing, potted with thermally conductive resin
- Low equivalent series resistance and able to withstand high ripple current
- Able to withstand impacting of high-peak current
- Low capacitance loss, low self-inductance, low internal temperature
- Long service life, excellent flame retardant property (level of UL94V-0)

主要用途 Typical Applications

- 广泛应用于高压高频脉冲电路中，尤其适用于IGBT吸收电路
- Widely used in high voltage, high frequency circuit, Especially suitable for IGBT snubber circuit

技术要求 Specifications

引用标准 Reference Standard	GB/T 17702 (IEC 61071)
气候类别 Climatic Category	40/105/56
额定温度 Rated Temperature	85°C
工作温度 Operating temperature	-40~105°C
额定电压 U_N Normal Voltage	630/850/1000/1200/1600/2000/2500/3000Vdc 420/450/500/600/650/700/725/750Vac
容量偏差 Capacitance Tolerance	$\pm 5\%$ (J) $\pm 10\%$ (K)
耐电压 Voltage Proof	$1.5U_N$ (10s)
绝缘电阻 R_{ins} Insulation Resistance	$C_N \leq 0.33 \mu F: \geq 15000 M\Omega$ $C_N > 0.33 \mu F: \geq 5000s$ (20°C 100Vdc, 1min)
损耗角正切 $\tan \delta$ Dissipation Factor	≤ 0.0005 (1kHz, 20°C)
预期寿命 t_{EL} Expected Lifetime	100,000h@ U_N , $\theta_{rs}=70^\circ C$

■ 外形尺寸 Dimensions (mm)

630Vdc (420Vac)								
C _N (μF)	W (mm)	H (mm)	T (mm)	L _s (nH)	dV/dt (V/μs)	ESR @100kHz (mΩ)	I _{max} (A)	备注
0.68	37	25	15	23	900	5	9	
1.0	37	30	16	23	900	5	12	
1.5	37	34	20	23	900	4.5	17	
22	42	40	20	29	600	4	18.5	
3.3	42	44	24	29	600	3.5	20	
4.7	42	45	30	29	600	3.5	23	
6	42	43	42	29	600	3	25	
7	57	45	30	33	360	2.5	25	
9	57	50	35	33	360	2.5	29	

850Vdc (450Vac)								
C _N (μF)	W (mm)	H (mm)	T (mm)	L _s (nH)	dV/dt (V/μs)	ESR @100kHz (mΩ)	I _{max} (A)	备注
0.47	37	25	15	23	1200	5	9	
0.68	37	30	16	23	1200	5	12	
1.0	37	34	20	23	1200	5	14	
1.5	37	34	20	23	1200	5	18	
1.5	42	40	20	29	750	4.5	18.5	
2.2	42	40	20	29	750	4.5	19.5	
3.3	42	45	30	29	750	4.5	21.5	
4.7	57	45	30	33	450	4	24.5	
6	57	50	35	33	450	4	26	

1000Vdc (500Vac)								
C _N (μF)	W (mm)	H (mm)	T (mm)	L _s (nH)	dV/dt (V/μs)	ESR @100kHz (mΩ)	I _{max} (A)	备注
0.47	37	25	15	23	1300	5	9	
0.68	37	30	16	23	1300	5	10.5	
1.0	37	34	20	23	1300	4.5	15	
1.5	42	40	20	29	850	4.5	16	
2.2	42	44	24	29	850	4	20	
3.3	42	43	42	29	850	4	22	
3.3	57	45	30	33	500	4	20	
4.7	57	50	35	33	500	4	22	

1200Vdc (600Vac)								
C _N (μF)	W (mm)	H (mm)	T (mm)	L _s (nH)	dV/dt (V/μs)	ESR @100kHz (mΩ)	I _{max} (A)	备注
0.33	37	25	15	23	1500	4.5	9	
0.47	37	30	16	23	1500	4.5	11	
0.68	37	34	20	23	1500	4.5	12.5	
1	42	40	20	29	950	4.0	16	
1.5	42	44	24	29	950	4.0	19.5	
2.2	42	43	42	29	950	4.0	21	
2.2	57	45	30	33	600	3.8	20	
3.3	57	50	35	33	600	3.8	23	

■ 外形尺寸 Dimensions (mm)

1600Vdc (650Vac)								
C _N (μF)	W (mm)	H (mm)	T (mm)	L _s (nH)	dV/dt (V/μs)	ESR @100kHz (mΩ)	I _{max} (A)	备注
0.22	37	25	15	23	1900	6	8	
0.33	37	30	16	23	1900	6	10	
0.47	37	34	20	23	1900	5.5	14	
0.68	42	40	20	29	1250	4	16	
1	42	45	30	29	1250	4	19.5	
1.5	42	43	42	29	1250	4	21	
1.5	57	45	30	33	750	3.5	22	
2	57	50	35	33	750	3.5	24	

2000Vdc (700Vac)								
C _N (μF)	W (mm)	H (mm)	T (mm)	L _s (nH)	dV/dt (V/μs)	ESR @100kHz (mΩ)	I _{max} (A)	备注
0.1	37	25	15	23	2300	8	7	
0.15	37	25	15	23	2300	8	8.5	
0.22	37	30	16	23	2300	6	10	
0.33	37	34	20	23	2300	6	13	
0.47	42	40	20	29	1300	4	15.5	
0.68	42	44	24	29	1300	3.5	18.5	
1	42	43	42	29	1300	3.5	21	
1	57	45	30	33	850	4	24	
1.5	57	50	35	33	850	4	24	

2500Vdc (725Vac)								
C _N (μF)	W (mm)	H (mm)	T (mm)	L _s (nH)	dV/dt (V/μs)	ESR @100kHz (mΩ)	I _{max} (A)	备注
0.068	37	25	15	23	3300	8.5	6.5	
0.1	37	30	16	23	3300	8.5	8	
0.15	37	34	20	23	3300	8	11	
0.22	42	40	20	29	2100	4	14	
0.33	42	44	24	29	2100	43.5	15.5	
0.47	42	45	30	29	2100	3.5	18	
0.68	42	43	42	29	2100	3.5	18.5	
0.68	57	45	30	33	1200	3.5	19	
1	57	50	35	33	1200	3.5	19.5	

3000Vdc (750Vac)								
C _N (μF)	W (mm)	H (mm)	T (mm)	L _s (nH)	dV/dt (V/μs)	ESR @100kHz (mΩ)	I _{max} (A)	备注
0.047	37	25	15	23	3500	8.5	7.5	
0.068	37	30	16	23	3500	8	9	
0.1	37	34	20	23	3500	7.5	10.5	
0.15	37	34	20	23	3500	7	12	
0.22	42	40	20	29	2100	5	13	
33	42	45	30	29	2100	4.5	16.5	
0.47	42	43	42	29	2100	4	18	
0.47	57	45	30	33	1200	4	18.5	
0.68	57	50	35	33	1200	4	19	

注：1、I_{max}为10kHz、环境70℃、ΔT_{case}=15℃的电流值。

2、表中未包含的产品规格可根据用户要求进行设计和制造。

Note:

1. I_{max} is the current value of 10kHz, environment 70℃, ΔT_{case}=15℃.

2. Product specifications not included in the table can be designed and manufactured according to user requirements.